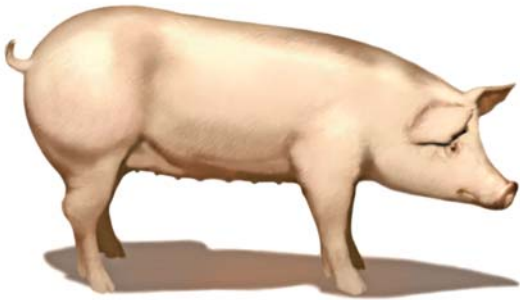


CAMBOROUGH™ 22



Achieve exceptional productivity with this robust female

Camborough 22 is a hybrid parent gilt capable of achieving in excess of 2600 kg of progeny liveweight sold per sow per year.

Camborough 22's exceptional performance provides Australian producers with:

- Superior weaning capability
- Robustness
- Increased weaning weights
- Short re-breeding intervals
- Higher conception rates
- Improved farrowing rates

Camborough 22 is a robust performer with the versatility to adapt to a variety of environments – indoor or outdoor.

Producers can expect consistently high prolificacy over a long working life with good litter sizes and exceptional finishing pig performance.

Advance your herd genetics. To discover if Camborough 22 is the right gilt for you, please contact your local PIC area representative.

CAMBOROUGH 22 TRAITS	
Prolificacy	✓✓✓
Maternal Instinct	✓✓✓
Longevity	✓✓✓
Durability	✓✓✓✓
Milking	✓✓
Ease of Management	✓✓✓✓
Growth Rate	✓✓✓
Carcass Value	✓✓✓
Meat Quality	✓✓✓

Camborough gilts are acknowledged as one of the world's most prolific and genetically improved females, and are the direct result of utilizing PIC's specialised systems for constant genetic improvement:

PICTraq™ is PIC's Global Genetic Information System and the foundation for PIC's genetic improvement programme. It is a purpose-designed genetic database which started recording in 1983 and now has data on over 5.6 million animals. EBVs are updated daily on over one million individual pigs.

PICMate™ is a computer software package based on 'Optimal Contribution Theory', and produces lists for use in the Genetic Nucleus herd. Inputs include the increasingly accurate PICebv™ of each boar and gilt in the herd, the pedigree and family structure of each boar and gilt in the herd and PIC's maximum permissible rate of inbreeding.

22

PIC



Camborough Family

Camborough gilts are carefully selected for reproductive and robustness traits using sophisticated multivariate BLUP* computer programs and PICMarq™ technology. The grandparent stock, from which the Camborough gilts are derived, are continually improved for the following damline traits:

REPRODUCTIVE TRAITS

- Litter size
- Stillborn
- Piglet survival
- Litter weaning weights
- Teat number

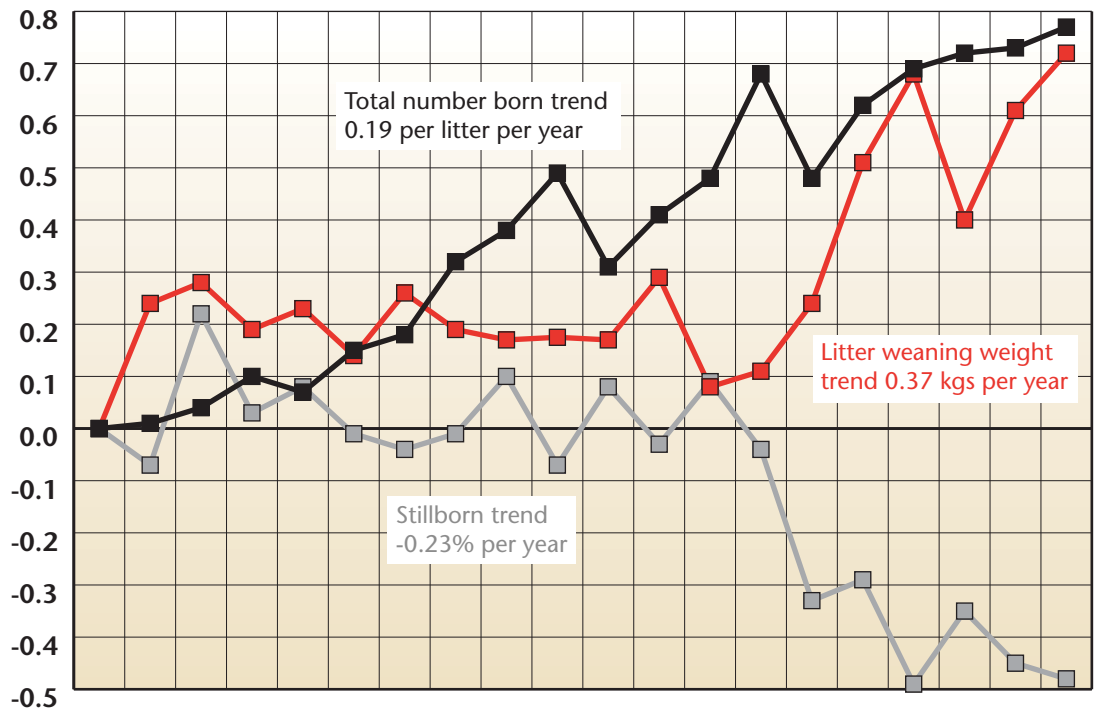
ROBUSTNESS TRAITS

- Pre-weaning mortality
- Nursery pig mortality
- Sow mortality/longevity
- Grower mortality

This means that Camborough replacement gilts always carry the latest genetic improvements, giving PIC customers the optimum in profit potential.

*BLUP = Best Linear Unbiased Prediction of breeding value.

Five year global genetic trends for Camborough sows



- Stillborn %
- Litter Weaning Wt
- Total Number Born/Litter

The purchaser or any other person relying upon the information contained herein, does so at his or her own risk and PIC shall not be liable for any loss or damage suffered as a result of the reliance by the purchaser or any other person upon anything contained herein, nor shall it be liable for any damage suffered as a result of any action taken on the basis of information contained herein.



PIC Australia
 PO Box 39
 Grong Grong
 NSW 2652

Ph: 02-6956 2105
 Fax: 02-6956 2203

www.picaustralia.com.au