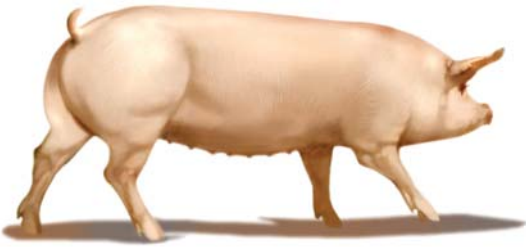


CAMBOROUGH™ 42



Take advantage of the world standard in female reproduction performance

Camborough 42 is a first cross parent gilt which is the result of the combination of classic hybridisation and quantitative genetics with breakthrough technology. This has led to its reputation as the 'world leading parent gilt'.

Camborough 42 is the most prolific pig available and offers:

- Reproductive consistency and efficiency
- Good mothering with exceptional milking ability
- Docile temperament
- High conception rates and efficient progeny

Camborough 42 performs best in a sympathetic environment where a high level of management allows her to express her full genetic potential.

Producers can expect consistently high prolificacy, strong maternal instinct and good mothering to give the progeny an ideal start to life.

Advance your herd genetics.
To discover if the Camborough 42 is the right gilt for you, please contact your local PIC area representative.

Camborough gilts are acknowledged as one of the world's most prolific and genetically improved females, and are the direct result of utilizing PIC's specialised systems for constant genetic improvement:

PICTraq™ is PIC's Global Genetic Information System and the foundation for PIC's genetic improvement programme. It is a purpose-designed genetic database which started recording in 1983 and now has data on over 5.6 million animals. EBVs are updated daily on over one million individual pigs.

PICMate™ is a computer software package based on 'Optimal Contribution Theory', and produces lists for use in the Genetic Nucleus herd. Inputs include the increasingly accurate PICebv™ of each boar and gilt in the herd, the pedigree and family structure of each boar and gilt in the herd and PIC's maximum permissible rate of inbreeding.

CAMBOROUGH 42 TRAITS	
Prolificacy	✓✓✓✓
Maternal Instinct	✓✓✓✓
Longevity	✓✓
Durability	✓✓
Milking	✓✓✓✓
Ease of Management	✓✓
Growth Rate	✓✓✓
Carcass Value	✓✓✓
Meat Quality	✓✓✓

42

PIC



Camborough Family

Camborough gilts are carefully selected for reproductive and robustness traits using sophisticated multivariate BLUP* computer programs and PICMarq™ technology. The grandparent stock, from which the Camborough gilts are derived, are continually improved for the following damline traits:

REPRODUCTIVE TRAITS

- Litter size
- Stillborn
- Piglet survival
- Litter weaning weights
- Teat number

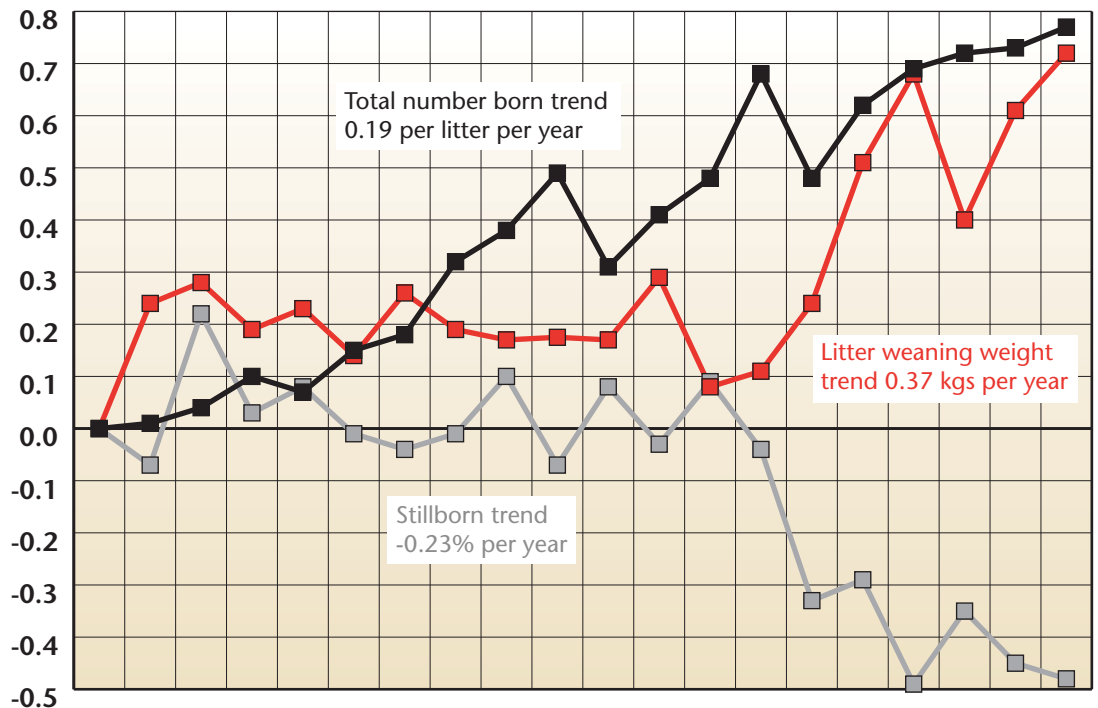
ROBUSTNESS TRAITS

- Pre-weaning mortality
- Nursery pig mortality
- Sow mortality/longevity
- Grower mortality

This means that Camborough replacement gilts always carry the latest genetic improvements, giving PIC customers the optimum in profit potential.

*BLUP = Best Linear Unbiased Prediction of breeding value.

Five year global genetic trends for Camborough sows



- Stillborn %
- Litter Weaning Wt
- Total Number Born/Litter

The purchaser or any other person relying upon the information contained herein, does so at his or her own risk and PIC shall not be liable for any loss or damage suffered as a result of the reliance by the purchaser or any other person upon anything contained herein, nor shall it be liable for any damage suffered as a result of any action taken on the basis of information contained herein.

PIC

PIC Australia
PO Box 39
Grong Grong
NSW 2652

Ph: 02-6956 2105
Fax: 02-6956 2203

www.picaustralia.com.au