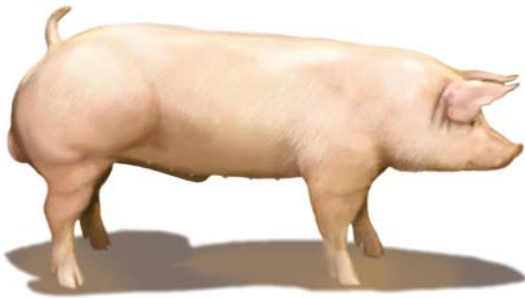


PIC BOAR 400



Add value to your operation with this high lean performer

PICBOAR 400 is a vigorous and fertile natural service sire which has been developed to provide great value, with particularly high lean characteristics to match your requirements

This means PICBOAR 400 offers:

- High yielding progeny with excellent carcass characteristics
- Superior carcass conformation, highly acceptable to the Singapore market
- Suitability for a range of intensive and extensive piggery operations

PICBOAR 400 is a hybrid boar developed as a result of intense selection for muscular conformation and lean meat yield, producing market pigs with good all-round performance.

The PICBOAR 400 undergoes extensive performance testing and trait evaluation.

PIC uses a combination of trait EBVs including Daily Gain, Backfat, Loin

Depth, Lean Percent and Feed Intake as well as a number of conformation EBVs to evaluate potential sires.

PICBOAR 400 is available for natural service and as a Liquid Genes product.

To discover if PICBOAR 400 is the right boar for you, please contact your local PIC area representative.

PICBOAR Trait Characteristics.

PICBOAR	331	400	427	500
Daily Gain	✓✓✓✓	✓✓	✓	✓✓✓
P2 Backfat	✓✓✓	✓✓✓	✓✓✓✓	✓✓✓✓
Loin Depth	✓✓	✓✓✓✓	✓✓✓✓✓	✓✓✓
Lean Percentage	✓✓	✓✓✓✓	✓✓✓✓✓	✓✓✓
Feed Conversion	✓✓✓	✓✓✓	✓✓✓✓	✓✓✓✓
Available as	Liquid Genes Natural Service	Liquid Genes Natural Service	Liquid Genes	Liquid Genes

400

LiquidGene™
Product of PIC

PIC



PICBOARS maximise your profitability through:

- ✓ Excellent growth and feed efficiency to heavier weight markets
- ✓ Low backfat, high lean percentage and carcass yield
- ✓ Superior pork quality and processor demand

PICBOARS give you the confidence to achieve consistent results through our utilisation of specialised systems for constant genetic improvement:

PICTraq™ is PIC's Global Genetic Information System and the foundation for PIC's genetic improvement program. It is a purpose-designed genetic database which started recording in 1983 and now has data on over 5.6 million animals. EBVs are updated daily on over one million individual pigs.

PICTraq™ connects pigs all over the world by their pedigree ties and measures the performance across all countries in the PIC group. It analyses and provides genotype information, and daily updates marker effects for a range of EBV traits targeted in sire-line and dam-line marker panels. It plays a vital role in optimal selection and mate allocation in the Genetic Nucleus herds.

PICMate™ is a computer software package based on 'Optimal Contribution Theory', and produces lists for use in the Genetic Nucleus herd. Inputs include the increasingly accurate PICebv™ of each boar and gilt in the herd, the pedigree and family structure of each boar and gilt in the herd and PIC's maximum permissible rate of inbreeding.

PICMate™ can generate:

- A mating list to show which sows should be mated to which boars
- A set of GN boars and gilts that when mated together will give a high rate of genetic improvement while staying below a targeted rate of inbreeding
- A selection list to show which young boars and gilts should be selected
- A culling list that shows which boars and sows are no longer needed

Our unique PICBOAR products are designed to provide real benefits for your particular operation.

The right combination for you.

PIC Australia continually reviews the predicted progeny performance of alternative sow and boar matings. This enables us to determine the combination of PICBOAR and PIC Camborough Gilts to maximise the potential productivity for your operation. Ask your local PIC representative to help you select the right combination for your business.

The purchaser or any other person relying upon the information contained herein, does so at his or her own risk and PIC shall not be liable for any loss or damage suffered as a result of the reliance by the purchaser or any other person upon anything contained herein, nor shall it be liable for any damage suffered as a result of any action taken on the basis of information contained herein.

LiquidGene™
Product of PIC

PIC BOAR

PIC

PIC Australia
PO Box 39
Grong Grong
NSW 2652

Ph: 02-6956 2105
Fax: 02-6956 2203

www.picaustralia.com.au